



To prevent invasive *Aedes* mosquitoes, remove standing water indoors and outdoors

# Alert! Prevent, Protect and Report *Aedes* Mosquitoes



## Prevent Indoors

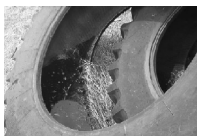
- Change water at least weekly in pots, vases, saucers and pet bowls



- Use screens on windows and doors
- Do not leave water out for longer than 1 week

## Outdoors (weekly)

- Dump out water that collects in unused tires, toys, storage containers and buckets
- Change water in birdbaths
- Circulate water in fountains and pools
- Drain water from plant saucers, tree holes, sprinkler control boxes, puddles and rain gutters
- Remove water that has accumulated on tarps, stored vehicles and boats in storage



## Monthly

- Check screens on rain barrel openings and on buckets used to collect water



## Protect

- Install or repair screens on doors, windows and rain barrel openings and on buckets used to collect water
- Wear long-sleeved shirts, pants, socks and shoes when outside, especially at dawn and dusk



- Apply repellents such as DEET, picaridin, oil of lemon eucalyptus or IR3535 to skin and/or clothing (as directed on the product label)



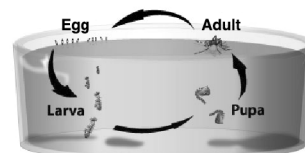
## Report

- Call or e-mail the County Vector Control Program to report daytime mosquito bites (especially those received indoors), mosquito breeding sources and mosquitoes that are black with white stripes

## Invasive *Aedes* Facts

- Found indoors and outdoors
- Black with white stripes
- Prefer to bite people but bite animals too
- Lay eggs in small water-holding containers like plant saucers, vases, birdbaths, ornamental fountains, yard toys, discarded tires and even tree holes
- Eggs can survive without water for several months

## Life Cycle



Courtesy Greater L.A. County Vector Control

- Eggs hatch 1–2 days after touching water
- Larvae feed on algae, small aquatic organisms and plant & animal material in the water
- Eggs can grow to adults in as little as 1 week
- Adults live up to 3 weeks
- Eggs and adults found in and around homes
- Prefer moderate to warm climates (i.e., San Diego)

**Contact**  
 (858) 694-2888 • [vector@sdcounty.ca.gov](mailto:vector@sdcounty.ca.gov)  
[www.sdvector.com](http://www.sdvector.com)

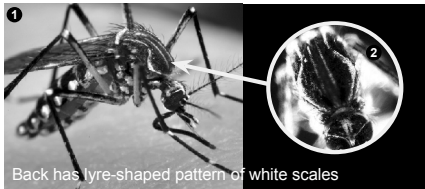
**REPORT INVASIVE Aedes MOSQUITOES • (858) 694-2888**

# Aedes Mosquitoes

Invasive *Aedes* mosquitoes are not native to California. They are black with white stripes and aggressively bite people during the day, especially indoors. They breed in and around homes and can transmit dengue, chikungunya, yellow fever and West Nile viruses.

## Mosquito Identification

***Aedes aegypti*** White bands on body & legs



Back has lyre-shaped pattern of white scales

***Aedes albopictus*** White bands on body & legs



Back has one silvery white stripe down the middle

1,3 Photos & ID courtesy James Gathany • Center for Disease Control  
2,4 Photos & ID courtesy University of Florida • Florida Medical Entomology Laboratory

PREVENT•PROTECT•REPORT



Scan QR Code with your smart phone to find us on the web!



COUNTY OF SAN DIEGO  
Department of Environmental Health  
**Vector Control Program**  
5570 Overland Avenue, Suite 102  
San Diego, CA 92123  
(858) 694-2888



Prevent



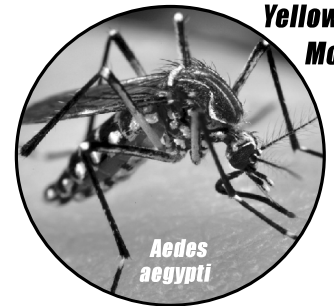
Protect



Report



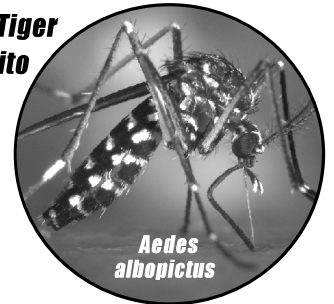
# Invasive Aedes Mosquitoes



Yellow Fever Mosquito

*Aedes aegypti*

Asian Tiger Mosquito



*Aedes albopictus*



COUNTY OF SAN DIEGO  
Department of Environmental Health  
**Vector Control Program**

WWW.SDVECTOR.COM

WWW.SDVECTOR.COM

WWW.SDVECTOR.COM